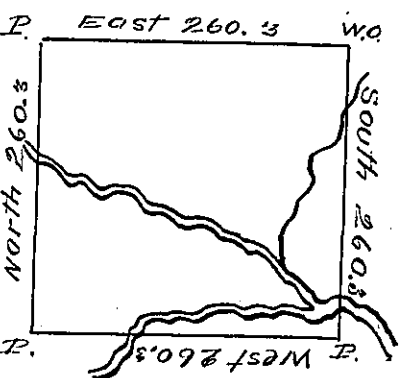


John Shee.



The above is the draught of a survey made March 14<sup>th</sup> 1795 in pursuance of a warrant granted to Thomas Shields on the 14<sup>th</sup> day of April 1792 situate Northwest of the Ohio river on ~~the~~ Little Beaver Creek — adjoining land granted to John Shee called Fanano containing 400 acres with the usual allowance of 6 P. Cent for.

J. M. Hoge D.S.

Daniel Brodhead Esq. S.G.

IN TESTIMONY that the above is a copy of the original remaining on file in the Department of Internal Affairs of Pennsylvania, made conformably to an Act of Assembly approved the 16th day of February, 1833, I have hereunto set my Hand and caused the Seal of said Department to be affixed at Harrisburg, this eighth day of December 1906.

*Laurel P. Brown*  
Secretary of Internal Affairs.